

# Operating Instructions

(Read this manual carefully before using EDGELIGHT™ Product)

## **Shanghai Edge Light Industry Co.,LTD.**

Add:3301 South Hongmei Rd., Minhang District,  
Shanghai, China ZIP:201108

TEL:+86-21-64412288

FAX:+86-21-64412266

E-mail: [info@cnedgelight.com](mailto:info@cnedgelight.com)

Published by EDGELIGHT Corporation

Copyright 2008 EDGELIGHT Corporation

All rights reserved.

## Operating Instructions

Thank you for buying this EDGELIGHT™ product. Please read through these operating instructions so you will know how to operate your unit properly. After you have finished reading the instructions, keep them in a safe place for future reference.

### WARNING

This product is not waterproof. To prevent a fire or shock hazard, do not place any container filled with liquid near this equipment or expose it to dripping, splashing, rain or moisture.

### IMPORTANT



The lightning flash with arrowhead symbol, within an equilateral triangle, is intended to alert the user to the presence of uninsulated "dangerous voltage" within the product's enclosure that may be of sufficient magnitude to constitute a risk of electric shock to persons.

**CAUTION  
DO NOT OPEN**

**CAUTION:**  
TO PREVENT THE RISK OF ELECTRIC SHOCK, DO NOT REMOVE COVER (OR BACK). NO USER-SERVICEABLE PARTS INSIDE. REFER SERVICING TO QUALIFIED SERVICE PERSONNEL.



The exclamation point within an equilateral triangle is intended to alert the user to the presence of important operating and maintenance (servicing) instructions in the literature accompanying the appliance.

### INFORMATION TO USER

Alteration or modifications carried out without appropriate authorization may invalidate the user's right to operate the equipment.

# Operating Instructions

## SAFETY INSTRUCTIONS

To ensure your personal safety and to maximize the full operating potential of your Drive, read and follow these safety precautions:

**ENVIRONMENT-DO NOT** use the unit at places with high levels of dust, high temperature, or high humidity. Please use the unit in a place where it is not subjected to vibrations or shocks.

**POWER-** Please use correct power as required for this product.

**READ INSTRUCTIONS-** Read all safety and operating instructions before the Drive is operated.

**RETAIN INSTRUCTIONS-** Retain the safety and operating instructions for future reference.

**FOLLOW INSTRUCTIONS-** Follow all operating and use instructions.

**HEED WARNINGS-All** warnings must be adhered to.

**CLEANING-DO NOT** use aerosol cleaners. Use only a little alcohol or a damp cloth to clean the exterior housing.

**WATER AND MOISTURE-DO NOT** use this product near water.

**POWER SOURCES-** Operate this product from the type of power source indicated on the marking label. If you are not sure of the type of power available, consult Authorized EDGELIGHT™ Dealer.

**OVERLOADING-DO NOT** overload wall outlets and extension cords. Doing so can result in fire or electric shock.

**OBJECT AND LIQUID ENTRY-** Never push objects of any kind into this product. Touching dangerous voltage points may cause a short resulting in fire or electric shock. Do not spill liquid of any kind on this product.

**CONDENSATION-** Moisture will form in the operating section of the product causing performance to be impaired if it is brought from cool surroundings into a warmer environment. If you are moving the unit to a location with a warmer temperature, let the product stand for 1 to 2 hours in the new location before turning it back on.

# Operating Instructions

## SPECIFICATIONS



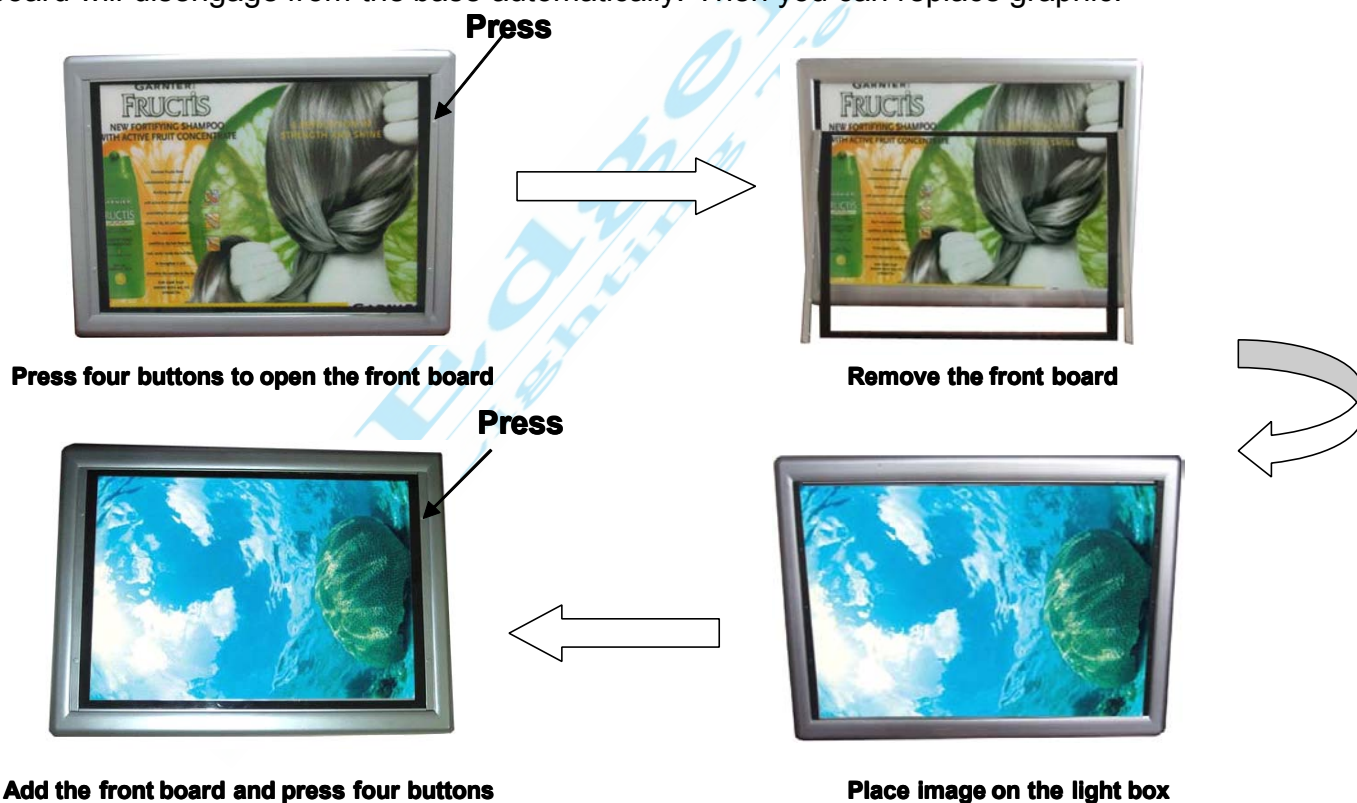
PF2-A3

Item No	PF2-A3
Viewing sides	Single
Frame size	491x356mm
Thickness	26mm
Viewing size	392x271mm
Image size	420x285mm
Packing size	520x40x365mm
G.W	2.3kgs
Light source	LED
Power supply	DC 12V 1.5A
Power	9W
Life span	Above 50000h

## INSTALLATION

### Graphic Replacement

There are two buttons on each side of the front board, press **all of them** lightly in turn, the front board will disengage from the base automatically. Then you can replace graphic.



### Notice:

Please make sure to press all buttons one by one. Only when you press all buttons, you can remove the front board, otherwise the device will be damaged.

# Operating Instructions

## A. On Desk

PF2-A3 series light box can stand on desk horizontally and vertically.

### Horizontal Standing

1. Release the standing leg
2. Insert the adapter
3. Connect the power supplier
4. Turn on the switch



### Vertical Standing

1. Unlocked the standing leg
2. Push the standing leg
3. Release the standing leg
4. Insert the adapter
5. Connect the power supplier
6. Turn on the switch



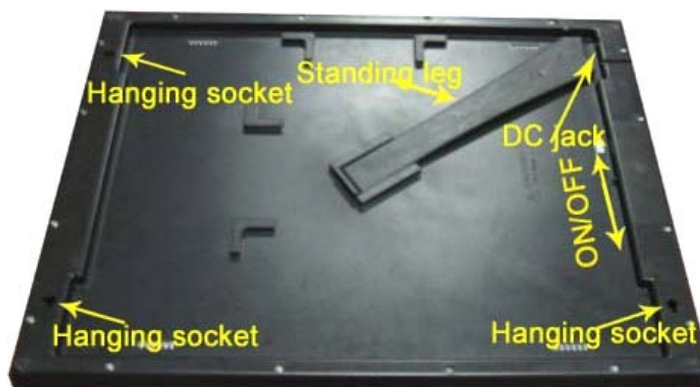
### Notice:

Please make sure to push the standing leg when it is unlocked. Wrong operation is possible to damage the standing leg.

## B. On the Wall

PF2-A3 series light box can be hung horizontally and vertically.

1. Measure installation dimension
2. Hang the light box on the wall
3. Insert the adapter
4. Connect the power supplier
5. Turn on the switch



# Operating Instructions

## ACCESSORIES

Operating instruction x 1

Adapter (AC100-240V) x 1

(Various plugs are available for your needs, such as CE, UL, SAA, etc



CE



UL



SAA

## NOTICE

\* Pay more attention that Slim Light Box not to be crashed. While transporting or working, keep sharp edge or instrument away from Slim Light Box . Use soft & wet textile to clean front board to avoid being scratched. Make sure to use right voltage.

\* Specifications and design subject to possible modifications without notice, due to improvements.

PLS download the more detailed user manual from the following website:  
<http://www.cnedgelight.com/image/PF2-A3.pdf>



Printed in China