

Operating Instructions

(Read this manual carefully before using EDGELIGHT[™] Product)

Shanghai Edge Light Industry Co.,LTD.

Add:3301 South Hongmei Rd., Minhang District,
Shanghai, China ZIP:201108

TEL:+86-21-64412288

FAX:+86-21-64412266

[E-mail: info@cnelight.com](mailto:info@cnelight.com)

Published by EDGELIGHT Corporation

Copyright 2008 EDGELIGHT Corporation

All rights reserved.

Operating Instructions

Thank you for buying this EDGELIGHT™ product. Please read through these operating instructions so you will know how to operate your unit properly. After you have finished reading the instructions, keep them in a safe place for future reference.

WARNING

This product is not waterproof. To prevent a fire or shock hazard, do not place any container filled with liquid near this equipment or expose it to dripping, splashing, rain or moisture.

IMPORTANT



The lightning flash with arrowhead symbol, within an equilateral triangle, is intended to alert the user to the presence of uninsulated "dangerous voltage" within the product's enclosure that may be of sufficient magnitude to constitute a risk of electric shock to persons.

**CAUTION
DO NOT OPEN**

CAUTION:
TO PREVENT THE RISK OF ELECTRIC SHOCK, DO NOT REMOVE COVER (OR BACK). NO USER-SERVICEABLE PARTS INSIDE. REFER SERVICING TO QUALIFIED SERVICE PERSONNEL.



The exclamation point within an equilateral triangle is intended to alert the user to the presence of important operating and maintenance (servicing) instructions in the literature accompanying the appliance.

INFORMATION TO USER

Alteration or modifications carried out without appropriate authorization may invalidate the user's right to operate the equipment.

Operating Instructions

SAFETY INSTRUCTIONS

To ensure your personal safety and to maximize the full operating potential of this product, read and follow these safety precautions:

ENVIRONMENT-DO NOT use the unit at places with high levels of dust, high temperature, or high humidity. Please use the unit in a place where it is not subjected to vibrations or shocks.

POWER- Please use correct power as required for this product.

READ INSTRUCTIONS-Read all safety and operating instructions before this product is operated.

RETAIN INSTRUCTIONS-Retain the safety and operating instructions for future reference.

FOLLOW INSTRUCTIONS-Follow all operating and use instructions.

HEED WARNINGS-All warnings must be adhered to.

CLEANING-DO NOT use aerosol cleaners. Use only a little alcohol or a damp cloth to clean the exterior housing.

WATER AND MOISTURE-DO NOT use this product near water.

POWER SOURCES- Operate this product from the type of power source indicated on the marking label. If you are not sure of the type of power available, consult Authorized EDGELIGHT™ Dealer.

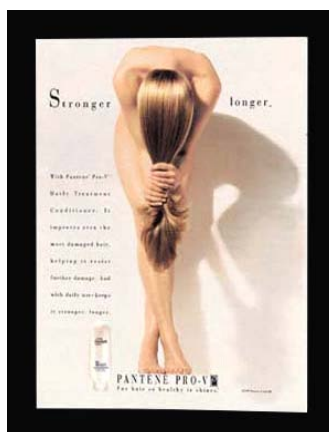
OVERLOADING-DO NOT overload wall outlets and extension cords. Doing so can result in fire or electric shock.

OBJECT AND LIQUID ENTRY-Never push objects of any kind into this product. Touching dangerous voltage points may cause a short resulting in fire or electric shock. Do not spill liquid of any kind on this product.

CONDENSATION-Moisture will form in the operating section of the product causing performance to be impaired if it is brought from cool surroundings into a warmer environment. If you are moving the unit to a location with a warmer temperature, let the product stand for 1 to 2 hours in the new location before turning it back on.

Operating Instructions

SPECIFICATIONS



AF9 SERIES

AF9 series slim light box is a magnetic type light box with double magnetic facia, it is used cupule to open. It can embedded in the wall.

Item		Frame size	Viewing size	Thicknes	Film size	Power supply	Power	
AF9	LED	A0	1269x921mm	1173x825mm	39mm	1189*841 mm	DC 12V 5A	40W
		A1	921x674mm	825x578mm		841*594 mm	DC 12V 2A	20W
		A2	674x500mm	578x404mm		594*420 mm	DC 12V 1.5A	13W
		A4	219x306mm	183x270mm		210*297 mm	DC 12V 1A	6W
		B6	134x185mm	98x149mm		125*176 mm	DC 12V 1A	4W
Life span		Above 50000h						

INSTALLATION

Graphic Replacement

1. Turn off power
2. Using cupule to open the front board
3. Remove the front board and AD graphic lightly
4. Remove two magnetic strips on the back side of AD graphic
5. Change AD graphic
6. Add back the magnetic strips
7. Add the front board and AD graphic

Operating Instructions



Suspension

1. Measure installation dimension
2. Hang the light box in the right place
 - A. If the wall or ceiling is made of wood, plastic, aluminium and so on, you can directly hang the light box by lightboxes pendants
 - B. If the wall or ceiling is made of concrete, brick, marble and so on, you should firstly drill holes in the wall or ceiling and screw expand screws, and then hang the light box by lightboxes pendants.
3. Connect adapter
4. Connect the power supplier



Operating Instructions

ACCESSORIES

Operating instruction x 1

Adapter (AC100-240V) x 1

(Various plugs are available for your needs, such as CE, UL, SAA, etc.)



CE



UL



SAA

NOTICE

* Pay more attention that Slim Light Box not to be crashed. While transporting or working, keep sharp edge or instrument away from Slim Light Box. Use soft & wet textile to clean front board to avoid being scratched. Make sure to use right voltage.

* Specifications and design subject to possible modifications without notice, due to improvements.

PLS download the more detailed user manual from the following website:

<http://www.cnedgelight.com/image/AF9 Series.pdf>



Printed in China



is a trademark of Shanghai Edge Light Industry Co., Ltd

<http://www.cnedgelight.com>