



## Operating Instructions

Thank you for buying this EdgeLight® product. Please read through these operating instructions so you will know how to operate your unit properly. After you have finished reading the instructions, keep them in a safe place for future reference.

### IMPORTANT



The lightning flash with arrowhead symbol, within an equilateral triangle, is intended to alert the user to the presence of uninsulated "dangerous voltage" within the product's enclosure that may be of sufficient magnitude to constitute a risk of electric shock to persons.

**CAUTION  
DO NOT OPEN**

**CAUTION:**  
TO PREVENT THE RISK OF ELECTRIC SHOCK, DO NOT REMOVE COVER (OR BACK). NO USER-SERVICEABLE PARTS INSIDE. REFER SERVICING TO QUALIFIED SERVICE PERSONNEL.



The exclamation point within an equilateral triangle is intended to alert the user to the presence of important operating and maintenance (servicing) instructions in the literature accompanying the appliance.

### Information to User

Alteration or modifications carried out without appropriate authorization may invalidate the user's right to operate the equipment.

# Operating Instructions

## SAFETY INSTRUCTIONS

To ensure your personal safety and to maximize the full operating potential of this product, read and follow these safety precautions:

**ENVIRONMENT-DO NOT** use the unit at places with high levels of dust or high temperature. Please use the unit in a place where it is not subjected to vibrations or shocks.

**POWER-** Please use correct power as required for this product.

**READ INSTRUCTIONS-**Read all safety and operating instructions before this product is operated.

**RETAIN INSTRUCTIONS-**Retain the safety and operating instructions for future reference.

**FOLLOW INSTRUCTIONS-**Follow all operating and use instructions.

**HEED WARNINGS-**All warnings must be adhered to.

**CLEANING-DO NOT** use aerosol cleaners. Use only a little alcohol or a damp cloth to clean the exterior housing.

**POWER SOURCES-** Operate this product from the type of power source indicated on the marking label. If you are not sure of the type of power available, consult Authorized EDGELIGHT™ Dealer.

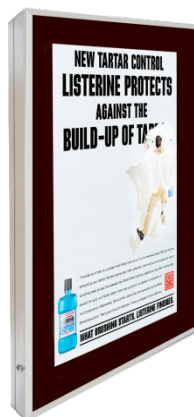
**OVERLOADING-DO NOT** overload wall outlets and extension cords. Doing so can result in fire or electric shock.

**OBJECT AND LIQUID ENTRY-**Never push objects of any kind into this product. Touching dangerous voltage points may cause a short resulting in fire or electric shock. Do not spill liquid of any kind on this product.

**CONDENSATION-**Moisture will form in the operating section of the product causing performance to be impaired if it is brought from cool surroundings into a warmer environment. If you are moving the unit to a location with a warmer temperature, let the product stand for 1 to 2 hours in the new location before turning it back on.

# Operating Instructions

## SPECIFICATIONS



### AF50 SERIES

Item		Frame size	Viewing size	Thickness	Film size	Packing size	Gross weight		
		mm	mm	mm	mm	cm	kg		
AF50	T5		1800x1200	1648x1048	50	1664x1064	186x9x126	0.21	
		B2	636x843	480x687		500x707	84x9x65	0.05	
		B0	1550x1136	1394x980		1414x1000	162x9x121	0.18	
		A0	1325x977	1169x821		1189x841	134x9x102	0.12	
		A1	977x730	821x574		841x594	100x9x77	0.07	
		A2	730x556	574x400		594x420	73x9x57	0.04	
	LED		1800x1200	1644x1044		1664x1064	186x9x126	0.21	
		B2	823x616	687x480		707x500	84x9x65	0.05	
		B1	1116x823	980x687		1000x707	114x9x85	0.09	
		B0	1530x1116	1394x980		1414x1000	162x9x121	0.18	
		A0	1305x957	1169x821		1189x841	134x9x102	0.12	
		A1	957x710	821x574		841x594	100x9x77	0.07	
	SMD	A2	710x536	574x400		594x420	73x9x57	0.04	
			1800x1200	1664x1064		1684x1044	186x9x126	0.21	
		B2	823x616	687x480		707x500	84x9x65	0.05	
		B1	1116x823	980x687		1000x707	114x9x85	0.09	
		B0	1530x1116	1394x980		1414x1000	162x9x121	0.18	
		A0	1305x957	1169x821		1189x841	134x9x102	0.12	
	Life span		T5 Above10000h			LED SMD Above50000h以上			

## INSTALLATION

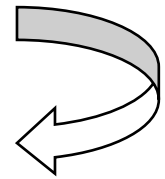
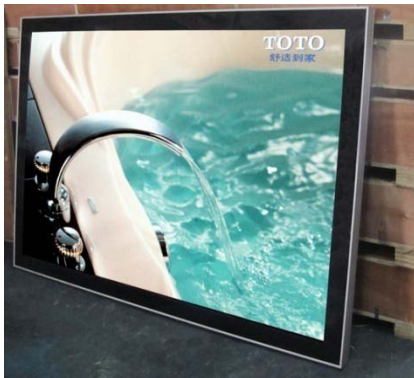
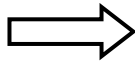
### Graphic Replacement

1. Turn off power
2. Open the front board by the key
3. Remove AD graphic from the front board
4. Change AD graphic
5. Lock the front board



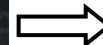
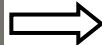
is a trademark of Shanghai Edge Light Industry Co., Ltd

## Operating Instructions

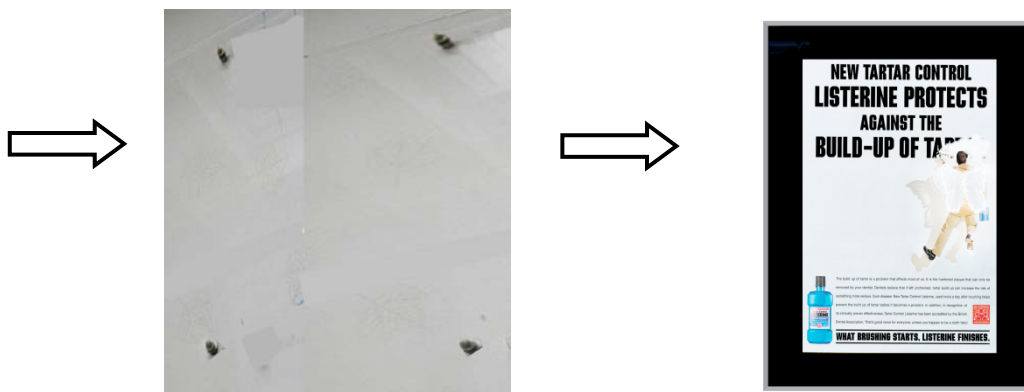


### On the Wall

1. Measure installation dimension
2. Fix the light box on the wall by screws
  - A. If the wall is made of wood, plastic, aluminium and so on, you can directly fix the light box on the wall by self-tapping screws
  - B. If the wall is made of concrete, brick, marble and so on, you should firstly drill holes in the wall and screw expand screws, and then fix the light box.
3. Connect adapter
4. Connect the power supplier



# Operating Instructions



## ACCESSORIES

Operating instruction	x 1
Key	x 1
Adapter (AC100-240V)	x 1

(Various plugs are available for your needs, such as CE, UL, SAA, etc.)



CE



UL



SAA

## NOTICE

- \* Pay more attention that Slim Light Box not to be crashed. While transporting or working, keep sharp edge or instrument away from Slim Light Box . Use soft & wet textile to clean front board to avoid being scratched. Make sure to use right voltage.
- \* Specifications and design subject to possible modifications without notice, due to improvements.

PLS download the more detailed user manual from the following website:  
<http://www.cnedgelight.com/image/AF10Series.pdf>



Printed in China