

# Operating Instructions

(Read this manual carefully before using EdgeLight<sup>®</sup> Product)

**Shanghai Edge Light Industry Co.,LTD.**

TEL:+86-21-64412288

FAX:+86-21-64412266

[E-mail: info@cnelight.com](mailto:info@cnelight.com)

Published by EdgeLight<sup>®</sup> Corporation

Copyright 2010 EdgeLight<sup>®</sup> Corporation

All rights reserved.



## Operating Instructions

Thank you for buying this EdgeLight ® product. Please read through these operating instructions so you will know how to operate your unit properly. After you have finished reading the instructions, keep them in a safe place for future reference.

### WARNING

This product is not waterproof. To prevent a fire or shock hazard, do not place any container filled with liquid near this equipment or expose it to dripping, splashing, rain or moisture.

### IMPORTANT

	<div style="border: 1px solid black; padding: 5px; text-align: center;"> <p>CAUTION DO NOT OPEN</p> </div>	
<p>The lightning flash with arrowhead symbol, within an equilateral triangle, is intended to alert the user to the presence of uninsulated "dangerous voltage" within the product's enclosure that may be of sufficient magnitude to constitute a risk of electric shock to persons.</p>	<p>Caution: to prevent the risk of electric shock, do not remove cover (or back). no user-serviceable parts inside. refer servicing to qualified service personnel.</p>	<p>The exclamation point within an equilateral triangle is intended to alert the user to the presence of important operating and maintenance (servicing) instructions in the literature accompanying the appliance.</p>

Information to User

Alteration or modifications carried out without appropriate authorization may invalidate the user's right to operate the equipment.

## Operating Instructions

### SAFETY INSTRUCTIONS

To ensure your personal safety and to maximize the full operating potential of this product, read and follow these safety precautions:

**ENVIRONMENT-DO NOT** use the unit at places with high levels of dust, high temperature, or high humidity. Please use the unit in a place where it is not subjected to vibrations or shocks.

**POWER-** Please use correct power as required for this product.

**READ INSTRUCTIONS-**Read all safety and operating instructions before this product is operated.

**RETAIN INSTRUCTIONS-**Retain the safety and operating instructions for future reference.

**FOLLOW INSTRUCTIONS-**Follow all operating and use instructions.

**HEED WARNINGS-**All warnings must be adhered to.

**CLEANING-DO NOT** use aerosol cleaners. Use only a little alcohol or a damp cloth to clean the exterior housing.

**WATER AND MOISTURE-DO NOT** use this product near water.

**POWER SOURCES-** Operate this product from the type of power source indicated on the marking label. If you are not sure of the type of power available, consult Authorized EdgeLight<sup>®</sup> Dealer.

**OVERLOADING-DO NOT** overload wall outlets and extension cords. Doing so can result in fire or electric shock.

**OBJECT AND LIQUID ENTRY-**Never push objects of any kind into this product. Touching dangerous voltage points may cause a short resulting in fire or electric shock. Do not spill liquid of any kind on this product.

**CONDENSATION-**Moisture will form in the operating section of the product causing performance to be impaired if it is brought from cool surroundings into a warmer environment. If you are moving the unit to a location with a warmer temperature, let the product stand for 1 to 2 hours in the new location before turning it back on.

# Operating Instructions

## SPECIFICATIONS



### AF42 Type

项目		外框尺寸	视窗尺寸	厚度	画布尺寸	包装尺寸	体积	毛重	
		mm	mm	mm	mm	cm	m <sup>3</sup>	kg	
AF42	LED	A4	297×210	291×204	40	318×231	50×5×30	0.01	1.1
		A3	420×297	414×291		441×318	58×9×46	0.02	2.3
		A2	594×420	588×414		615×441	73×9×57	0.04	4.5
		A1	841×594	835×588		862×615	100×9×77	0.07	9.2
		A0	1189×841	1183×835		1210×862	134×9×102	0.12	18
		B2	707×500	701×494		728×521	78×9×57	0.05	6.4
		B1	1000×707	994×701		1021×728	107×9×78	0.09	12.8
		B0	1414×1000	1408×994		1435×1021	162×9×121	0.18	25.5
使用寿命		50000h以上							

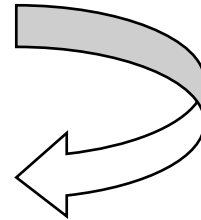
## INSTALLATION

### Graphic Replacement

1. Turn off power
2. out of the canvas
3. insert the canvas

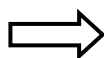
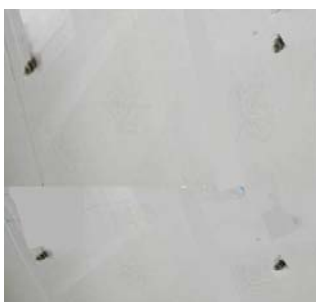
# Operating Instructions

Please see as follows:



## On the Wall

1. Measure installation dimension
2. Fix the light box on the wall by screws
  - A. If the wall is made of wood, plastic, aluminium and so on, you can directly fix the light box on the wall by self-tapping screws
  - B. If the wall is made of concrete, brick, marble and so on, you should firstly drill holes in the wall and screw expand screws, and then fix the light box.
3. Connect the power supplier



# Operating Instructions

## ACCESSORIES

Operating instruction	x 1
Power supply (AC100-240V)	x 1

(Various plugs are available for your needs, such as CE, UL, SAA, etc.)



CE



UL



SAA

## NOTICE

\* Pay more attention that Slim Light Box not to be crashed. While transporting or working, keep sharp edge or instrument away from Slim Light Box . Use soft & wet textile to clean front board to avoid being scratched. Make sure to use right voltage.

\*Specifications and design subject to possible modifications without notice,due to improvements.

PLS download the more detailed user manual from the following website:

<http://www.cnedgelight.com/image/AF2 Series.pdf>



is a trademark of Shanghai Edge Light Industry Co., Ltd

<http://www.cnedgelight.com>