

Operating Instructions

(Read this manual carefully before using EDGELIGHT[™] Product)

Shanghai Edge Light Industry Co.,LTD.

Add:3301 South Hongmei Rd., Minhang District,
Shanghai, China ZIP:201108

TEL:+86-21-64412288

FAX:+86-21-64412266

E-mail: info@cnelight.com

Published by EDGELIGHT Corporation

Copyright 2008 EDGELIGHT Corporation

All rights reserved.

Operating Instructions

Thank you for buying this EDGELIGHT™ product. Please read through these operating instructions so you will know how to operate your unit properly. After you have finished reading the instructions, keep them in a safe place for future reference.

WARNING

This product is not waterproof. To prevent a fire or shock hazard, do not place any container filled with liquid near this equipment or expose it to dripping, splashing, rain or moisture.

IMPORTANT



The lightning flash with arrowhead symbol, within an equilateral triangle, is intended to alert the user to the presence of uninsulated "dangerous voltage" within the product's enclosure that may be of sufficient magnitude to constitute a risk of electric shock to persons.

**CAUTION
DO NOT OPEN**

CAUTION:
TO PREVENT THE RISK OF ELECTRIC SHOCK, DO NOT REMOVE COVER (OR BACK). NO USER-SERVICEABLE PARTS INSIDE. REFER SERVICING TO QUALIFIED SERVICE PERSONNEL.



The exclamation point within an equilateral triangle is intended to alert the user to the presence of important operating and maintenance (servicing) instructions in the literature accompanying the appliance.

Information to User

Alteration or modifications carried out without appropriate authorization may invalidate the user's right to operate the equipment.

Operating Instructions

SAFETY INSTRUCTIONS

To ensure your personal safety and to maximize the full operating potential of this product, read and follow these safety precautions:

ENVIRONMENT-DO NOT use the unit at places with high levels of dust, high temperature, or high humidity. Please use the unit in a place where it is not subjected to vibrations or shocks.

POWER- Please use correct power as required for this product.

READ INSTRUCTIONS-Read all safety and operating instructions before this product is operated.

RETAIN INSTRUCTIONS-Retain the safety and operating instructions for future reference.

FOLLOW INSTRUCTIONS-Follow all operating and use instructions.

HEED WARNINGS-All warnings must be adhered to.

CLEANING-DO NOT use aerosol cleaners. Use only a little alcohol or a damp cloth to clean the exterior housing.

WATER AND MOISTURE-DO NOT use this product near water.

POWER SOURCES- Operate this product from the type of power source indicated on the marking label. If you are not sure of the type of power available, consult Authorized EDGELIGHT™ Dealer.

OVERLOADING-DO NOT overload wall outlets and extension cords. Doing so can result in fire or electric shock.

OBJECT AND LIQUID ENTRY-Never push objects of any kind into this product. Touching dangerous voltage points may cause a short resulting in fire or electric shock. Do not spill liquid of any kind on this product.

CONDENSATION-Moisture will form in the operating section of the product causing performance to be impaired if it is brought from cool surroundings into a warmer environment. If you are moving the unit to a location with a warmer temperature, let the product stand for 1 to 2 hours in the new location before turning it back on.

Operating Instructions

SPECIFICATIONS



AF3 SERIES

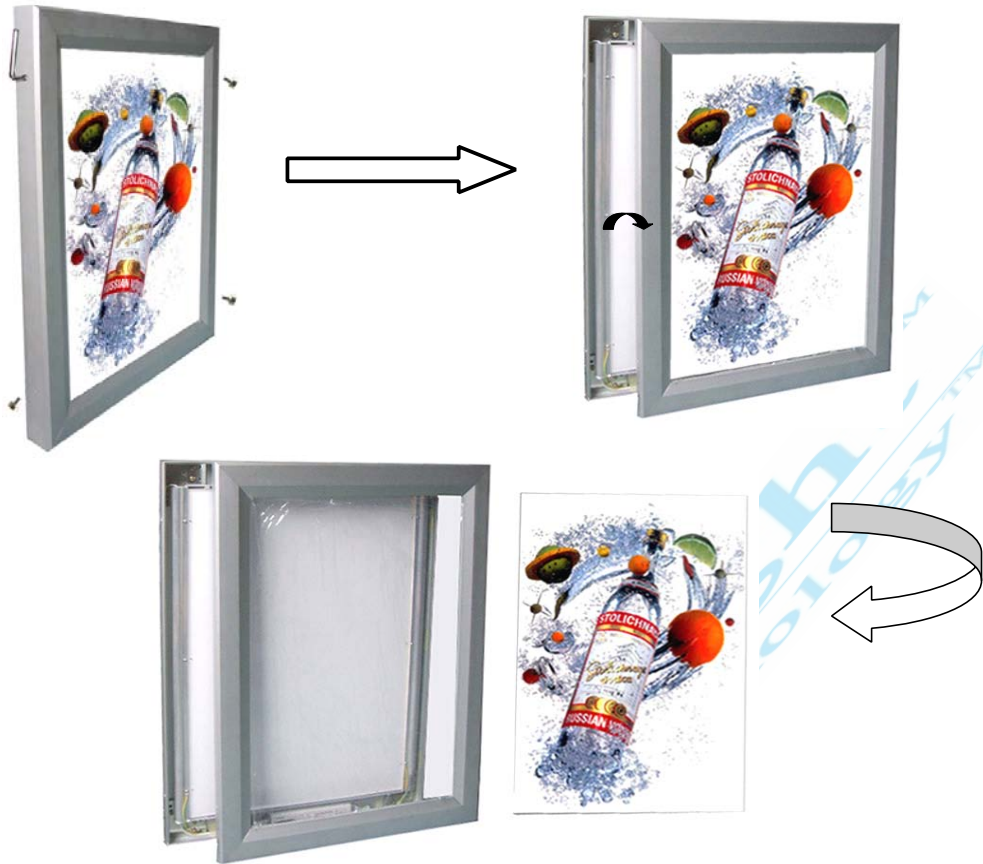
Item		Frame size	Viewing size	Thickness	Film size	Power supply	Power	
AF3	T5	3000×1500mm	2884×1384mm	37mm	2905*1399mm	AC 100-240V	140W	
		2400×1200mm	2284×1084mm		2305*1099mm	AC 100-240V	112W	
		1800×1200mm	1684×1084mm		1705*1099mm	AC 100-240V	84W	
		B0	1056×1470mm		940×1354mm	1414*1000mm	AC 100-240V	42W
		A0	1245×897mm		1129×781mm	1189*841mm	AC 100-240V	56W
		A1	897×650mm		781×534mm	841*594mm	AC 100-240V	42W
		A2	650×476mm		534×360mm	594*420mm	AC 100-240V	28W
	LED	3000×1500mm	2884×1384mm		2905*1399mm	DC 12V 10A	97W	
		2400×1200mm	2284×1084mm		2305*1099mm	DC 12V 7A	77W	
		1800×1200mm	1684×1084mm		1705*1099mm	DC 12V 5A	57W	
		B0	1470x1056mm		1354x940mm	1414*1000mm	DC 12V 5A	47W
		A0	1245×897mm		1128×781mm	1189*841mm	DC 12V 5A	38W
		A1	650x897mm		534x781mm	841*594mm	DC 12V 1.5A	16W
		A2	476x650mm		360x534mm	594*420mm	DC 12V 1A	12W
Life span		T5-----Above 10000h			LED-----Above 50000h			

INSTALLATION

Graphic Replacement

1. Turn off power
2. Unscrew bolts on the side of the frame
3. Remove front board and AD graphic
4. Change AD graphic
5. Fix front board
6. Screw bolts

Operating Instructions

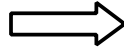
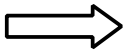


On the Wall

1. Measure installation dimension
2. Fix the light box on the wall by screws
 - A. If the wall is made of wood, plastic, aluminium and so on, you can directly fix the light box on the wall by self-tapping screws
 - B. If the wall is made of concrete, brick, marble and so on, you should firstly drill holes in the wall and screw expand screws, and then fix the light box.
3. Connect the power supplier



Operating Instructions



ACCESSORIES

Operating instruction x 1

Power supply (AC100-240V) x 1

(Various plugs are available for your needs, such as CE, UL, SAA, etc.)



CE



UL



SAA

NOTICE

- * Pay more attention that Slim Light Box not to be crashed. While transporting or working, keep sharp edge or instrument away from Slim Light Box . Use soft & wet textile to clean front board to avoid being scratched. Make sure to use right voltage.
- * Specifications and design subject to possible modifications without notice, due to improvements.

PLS download the more detailed user manual from the following website:

<http://www.cnedgelight.com/image/AF3 Series.pdf>



Printed in China



is a trademark of Shanghai Edge Light Industry Co., Ltd

<http://www.cnedgelight.com>