

Operating Instructions

(Read this manual carefully before using EdgeLight[®] Product)

Shanghai Edge Light Industry Co.,LTD.

TEL:+86-21-64412288

FAX:+86-21-64412266

E-mail: info@cnelight.com

Published by EdgeLight[®] Corporation

Copyright 2010 EdgeLight[®] Corporation

All rights reserved.




Operating Instructions

Thank you for buying this EdgeLight ® product. Please read through these operating instructions so you will know how to operate your unit properly. After you have read these instructions, keep them in a safe place for future reference.

WARNING

This product is not waterproof. To prevent a fire or shock hazard, do not place the product with liquid near this equipment or expose it to dripping, splashing, rain or moisture.

IMPORTANT

	CAUTION 	
<p>The lightning flash with arrowhead symbol, within an equilateral triangle, is intended to alert the user to the presence of uninsulated "dangerous voltage" within the product's enclosure that may be of sufficient magnitude to constitute a risk of electric shock to persons.</p>	<p>Caution: to prevent the risk of electric shock, do not remove cover (or back). no user-serviceable parts inside. refer servicing to qualified service personnel.</p>	<p>The exclamation point within an equilateral triangle is intended to alert the user to the presence of important operating and maintenance (servicing) instructions in the literature accompanying the appliance.</p>

Information to User

Alteration or modifications carried out without appropriate authorization may invalidate the user's right to operate the equipment.

SAFETY INSTRUCTIONS

To ensure your personal safety and to maximize the full operating potential of this product, read and follow these safety precautions:

ENVIRONMENT-DO NOT use the unit at places with high levels of dust, high temperature, or high humidity. Please use the unit in a place where it is not subjected to vibrations or shocks.

POWER- Please use correct power as required for this product.

READ INSTRUCTIONS-Read all safety and operating instructions before this product is operated.

RETAIN INSTRUCTIONS-Retain the safety and operating instructions for future reference.

FOLLOW INSTRUCTIONS-Follow all operating and use instructions.

HEED WARNINGS-All warnings must be adhered to.

CLEANING-DO NOT use aerosol cleaners. Use only a little alcohol or a damp cloth to clean the exterior housing.

WATER AND MOISTURE-DO NOT use this product near water.

POWER SOURCES- Operate this product from the type of power source indicated on the marking label. If you are not sure of the type of power available, consult Authorized EDGELIGHT™ Dealer.

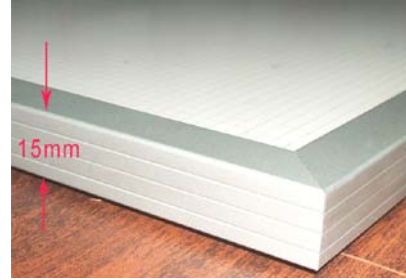
OVERLOADING-DO NOT overload wall outlets and extension cords. Doing so can result in fire or electric shock.

OBJECT AND LIQUID ENTRY-Never push objects of any kind into this product. Touching dangerous voltage points may cause a short resulting in fire or electric shock. Do not spill liquid of any kind on this product.

CONDENSATION-Moisture will form in the operating section of the product causing performance to be impaired if it is brought from cool surroundings into a warmer environment. If you are moving the unit to a location with a warmer temperature, let the product stand for 1 to 2 hours in the new location before turning it back on.

Operating Instructions

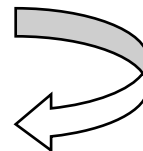
SPECIFICATIONS



AF20 SERIES

Item	Light	Frame size	Viewing size	Thickness	Power supply	Power	Gross
AF20	LED	300x300mm	273x273mm	15mm	1.5A-18W	15w	0.95kg
		400x400mm	373x373mm		2A-24W	20w	1.7kg
		500x500mm	473x473mm		2.5A-30W	26w	2.6kg
		600x600mm	573x573mm		3A-36W	31w	3.8kg
		800x800mm	773x773mm		4A-48W	41w	6.8kg
		1200x600mm	1173x573mm		3A-36W	31w	7.6kg
		1200x300mm	1173x273mm		3A-36W	31w	3.8kg
Life span		Above 50000h					

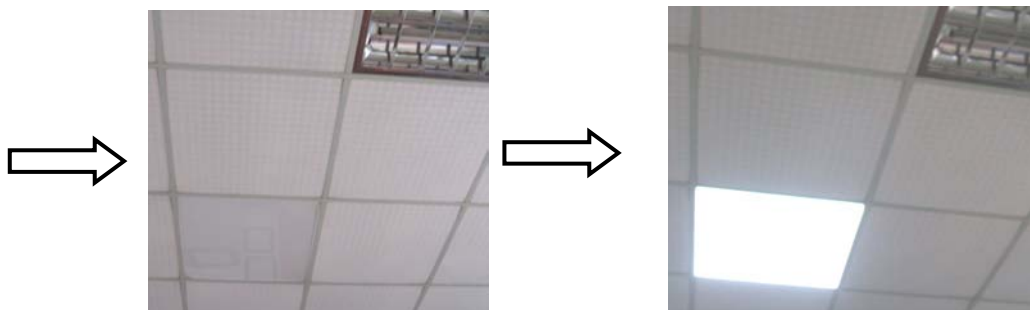
Please see as follows:



Operating Instructions

Installed on the ceiling

1. Measurement Dimension: According to the measurement of the ceiling light box the size of the actual installation dimensions.
2. Will be installed in the ceiling light box
3. Connect the power supplier



ACCESSORIES

Operating instruction x 1

Power supply (AC100-240V) x 1

(Various plugs are available for your needs, such as CE, UL, SAA, etc.)



CE



UL



SAA

NOTICE

* Pay more attention that Slim Light Box not to be crashed. While transporting or working, keep sharp edge or instrument away from Slim Light Box . Use soft & wet textile to clean front board to avoid being scratched. Make sure to use right voltage.

* Specifications and design subject to possible modifications without notice, due to improvements.

PLS download the more detailed user manual from the following website:
<http://www.cnedgelight.com/image/AF2 Series.pdf>

