

# Operating Instructions

(Read this manual carefully before using EDGELIGHT™ Product)

## **Shanghai Edge Light Industry Co.,LTD.**

Add:3301 South Hongmei Rd., Minhang District,  
Shanghai, China ZIP:201108

TEL:+86-21-64412288

FAX:+86-21-64412266

E-mail: [info@cnelight.com](mailto:info@cnelight.com)

Published by EDGELIGHT Corporation

Copyright 2008 EDGELIGHT Corporation

All rights reserved.

## Operating Instructions

Thank you for buying this EDGELIGHT™ product. Please read through these operating instructions so you will know how to operate your unit properly. After you have finished reading the instructions, keep them in a safe place for future reference.

### WARNING

This product is not waterproof. To prevent a fire or shock hazard, do not place any container filled with liquid near this equipment or expose it to dripping, splashing, rain or moisture.

### IMPORTANT



The lightning flash with arrowhead symbol, within an equilateral triangle, is intended to alert the user to the presence of uninsulated "dangerous voltage" within the product's enclosure that may be of sufficient magnitude to constitute a risk of electric shock to persons.

**CAUTION  
DO NOT OPEN**

**CAUTION:**  
TO PREVENT THE RISK OF ELECTRIC SHOCK, DO NOT REMOVE COVER (OR BACK). NO USER-SERVICEABLE PARTS INSIDE. REFER SERVICING TO QUALIFIED SERVICE PERSONNEL.



The exclamation point within an equilateral triangle is intended to alert the user to the presence of important operating and maintenance (servicing) instructions in the literature accompanying the appliance.

### INFORMATION TO USER

Alteration or modifications carried out without appropriate authorization may invalidate the user's right to operate the equipment.

# Operating Instructions

## SAFETY INSTRUCTIONS

To ensure your personal safety and to maximize the full operating potential of this product, read and follow these safety precautions:

**ENVIRONMENT-DO NOT** use the unit at places with high levels of dust, high temperature, or high humidity. Please use the unit in a place where it is not subjected to vibrations or shocks.

**POWER-** Please use correct power as required for this product.

**READ INSTRUCTIONS-**Read all safety and operating instructions before this product is operated.

**RETAIN INSTRUCTIONS-**Retain the safety and operating instructions for future reference.

**FOLLOW INSTRUCTIONS-**Follow all operating and use instructions.

**HEED WARNINGS-All** warnings must be adhered to.

**CLEANING-DO NOT** use aerosol cleaners. Use only a little alcohol or a damp cloth to clean the exterior housing.

**WATER AND MOISTURE-DO NOT** use this product near water.

**POWER SOURCES-** Operate this product from the type of power source indicated on the marking label. If you are not sure of the type of power available, consult Authorized EDGELIGHT™ Dealer.

**OVERLOADING-DO NOT** overload wall outlets and extension cords. Doing so can result in fire or electric shock.

**OBJECT AND LIQUID ENTRY-**Never push objects of any kind into this product. Touching dangerous voltage points may cause a short resulting in fire or electric shock. Do not spill liquid of any kind on this product.

**CONDENSATION-**Moisture will form in the operating section of the product causing performance to be impaired if it is brought from cool surroundings into a warmer environment. If you are moving the unit to a location with a warmer temperature, let the product stand for 1 to 2 hours in the new location before turning it back on.

# Operating Instructions

## SPECIFICATIONS



### AF13 SERIES

Item		Frame size	Viewing size	Thicknes	Film size	Power supply	Power	
AF13	T5	A0	1246×908mm	1176×838mm	25mm	1189x841mm	AC 100-240V	56W
		A1	651×908mm	581×838mm		841x594mm	AC 100-240V	28W
		A2	651×487mm	581×417mm		594x420mm	AC 100-240V	28W
	LED	B0	1452×1048mm	1382×978mm		1414x1000mm	DC 12V 5A	47W
		A0	1227×889mm	1157×819mm		1189x841mm	DC 12V 5A	40W
		A1	632×889mm	562×819mm		841x594mm	DC 12V 2A	20W
		A2	458×642mm	388×572mm		594x420mm	DC 12V 1.5A	13W
		A3	335×468mm	265×398mm		420x297mm	DC 12V 1A	8W
		A4	248×345mm	178×275mm		297x210mm	DC 12V 1A	6W
		Life span		T5-----Above 10000h			LED-----Above 50000h	

## INSTALLATION

### Graphic Replacement

1. Turn off power
2. Open the four upper covers
3. Remove front board and AD graphic
4. Change AD graphic
5. Place the front board
6. Close the four upper cover

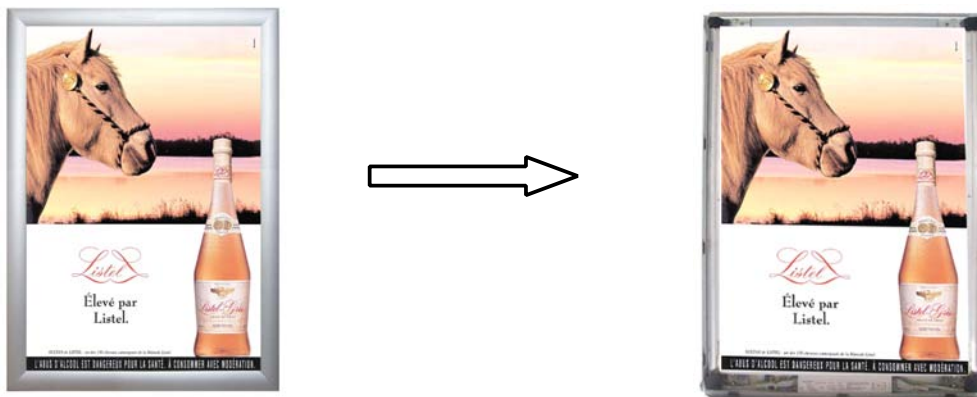
**Please see as follows:**



is a trademark of Shanghai Edge Light Industry Co., Ltd

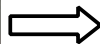
<http://www.cnedgelight.com>

# Operating Instructions

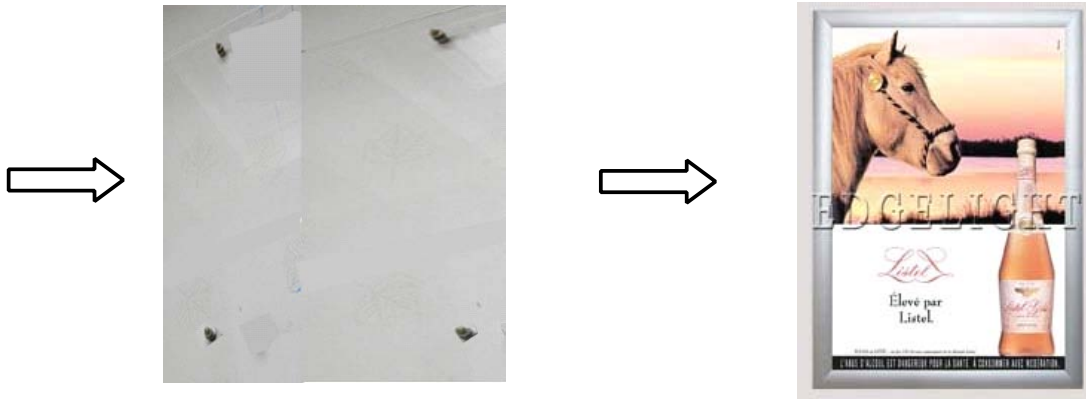


## On the Wall

1. Measure installation dimension
2. Fix the light box on the wall by screws
  - A. If the wall is made of wood, plastic, aluminium and so on, you can directly fix the light box on the wall by self-tapping screws
  - B. If the wall is made of concrete, brick, marble and so on, you should firstly drill holes in the wall and screw expand screws, and then fix the light box.
3. Connect the power supplier



# Operating Instructions



## ACCESSORIES

Operating instruction x 1

Power supply (AC100-240V) x 1

(Various plugs are available for your needs, such as CE, UL, SAA, etc.)



CE



UL



SAA

## NOTICE

\* Pay more attention that Slim Light Box not to be crashed. While transporting or working, keep sharp edge or instrument away from Slim Light Box. Use soft & wet textile to clean front board to avoid being scratched. Make sure to use right voltage.

\* Specifications and design subject to possible modifications without notice, due to improvements.

PLS download the more detailed user manual from the following website:

[http://www.cnedgelight.com/image/AF2\\_Series.pdf](http://www.cnedgelight.com/image/AF2_Series.pdf)



Printed in China

**EdgeLight**  
Shift Lighting Technology

is a trademark of Shanghai Edge Light Industry Co., Ltd

<http://www.cnedgelight.com>